



MATERIALS

Bernat® Velvet™ (10.5 oz/300 g; 315 yds/288 m)

Main Color (MC) White Sand (32029) **2 balls**

Contrast A Burgundy Plum (32004) **2 balls**

Contrast B Vapor Gray (32001) **2 balls**

Size U.S. K/10½ (6.5 mm) crochet hook **or size needed to obtain gauge.**

 CROCHET | SKILL LEVEL: **EASY**

ABBREVIATIONS

Approx = Approximately

Beg = Begin(ing)

Ch = Chain(s)

Cont = Continuity

Dc = Double crochet

Pat = Pattern

Rep = Repeat

Sp = Space(s)

St(s) = Stitch(es)

Yoh = Yarn over hook

MEASUREMENTS

Approx 45" x 55" [114.5 x 139.5 cm].

GAUGE

10 dc and 5½ rows = 4" [10 cm].

INSTRUCTIONS

Notes:

- When joining colors, work to last 2 loops on hook of first color. Draw new color through last 2 loops and proceed.
- Ch 3 at beg of row counts as dc throughout.

Stripe Pat

With MC, work 2 rows.

With A, work 2 rows.

With B, work 2 rows.

These 6 rows form Stripe Pat.

With MC, ch 125. Mark every 20th ch for easier counting. Foundation ch worked over multiple of 4 ch + 5. See diagram on page 2.

1st row: 1 dc in 4th ch from hook (counts as 2 dc). 1 dc in next ch. *Ch 1. Skip next ch. 1 dc in each of next 3 ch. Rep from * to end of chain. Turn.

2nd row: Ch 3. 1 dc in each of next 2 dc. *Ch 1. Skip next ch. 1 dc in each of next 3 dc. Rep from * to end of row. Join A. Break MC. Turn.

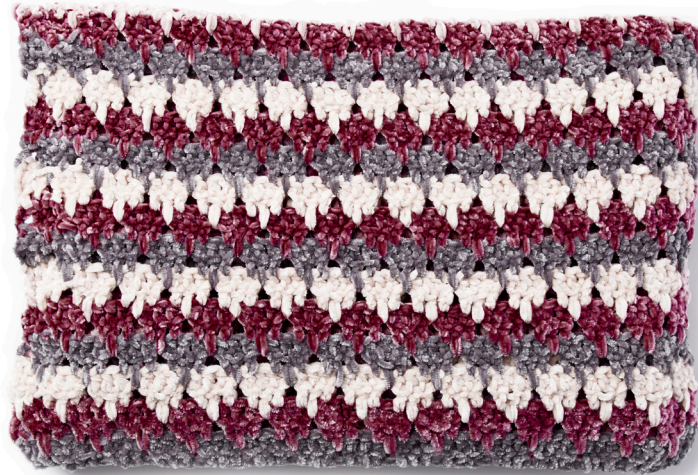
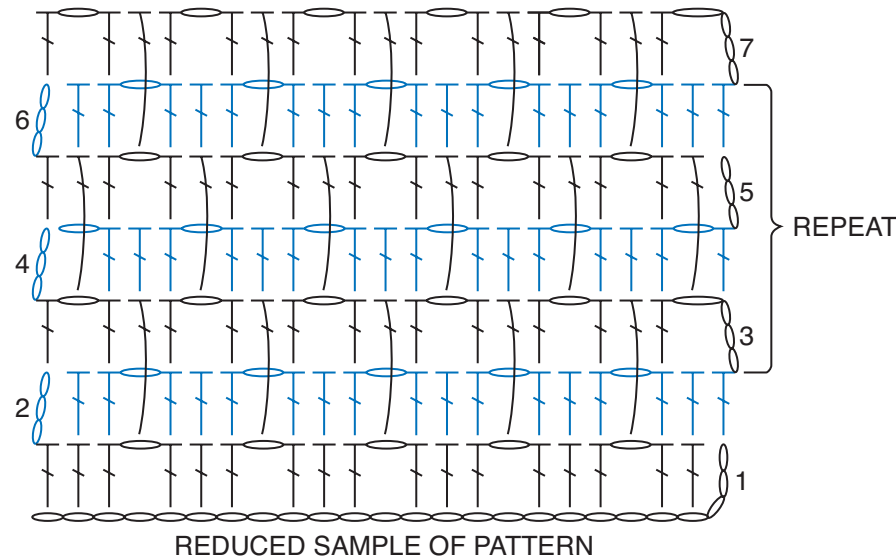
3rd row: With A, ch 4 (counts as dc and ch 1). Skip next dc. 1 dc in next dc. *Yoh and draw up a long loop in ch-1 sp 2 rows below. (Yoh and draw through 2 loops on hook) twice - extended dc made. 1 dc in next dc. Ch 1. Skip next dc. 1 dc in next dc. Rep from * to end of row. Turn.

4th row: Ch 4 (counts as dc and ch 1). Skip next ch. *1 dc in each of next 3 sts. Ch 1. Skip next ch. Rep from * ending with 1 dc in 3rd ch of turning ch. Join B. Break A. Turn.




5th row: With B, ch 3. 1 extended dc. 1 dc in next dc. *Ch 1. Skip next dc. 1 dc in next dc. 1 extended dc. 1 dc in next dc. Rep from * to end of row. Turn.

6th row: Ch 3. 1 dc in each of next 2 sts. *Ch 1. Skip next ch. 1 dc in each of next 3 sts. Rep from * to end of row. Join MC. Break B. Turn. First 6 rows of Stripe Pat are complete.

Keeping cont of Stripe Pat, rep 3rd to 6th rows until work from beg measures approx 58" [147.5 cm], ending with 2 rows of MC. Fasten off.



STITCH KEY

-  = chain (ch)
-  = double crochet (dc)
-  = extended double crochet (extended dc)